

CERTIFICATE OF ANALYSIS

Sigma-Aldrich Laborchemikalien GmbH D-30918 Seelze
Telefon: +49 5137 8238-150

Seelze, 19.06.2013/487327/13/12322

Order-No.:

Customer-No.:

Order-Code:

Quantity:

Production Date: 04.Jun.2013

Expiry Date: 04.Jun.2018

Article/Product: 31581

Batch : SZBD155XV

Anthracene OEKANAL®

Reference Material (RM)

1. General Information

Formula: C₁₄H₁₀

CAS-No.: [120-12-7]

Usage :

Molar mass: 178.23 g/Mole

Recomm. storage temp.: roomtemp.

The estimated uncertainty of a single measurement of the assay can be expected to be 0.5 % relative (confidence level = 95%, n= 6) whereby the assay measurements are calculated by 100% minus found impurities.

2. Batch Analysis

Identity (NMR)

Assay (GC)

Melting range

Water (Karl Fischer)

Date of Analysis

complying	
99.0	area %
216.4-217.8	°C
0.03	%
18.Jun.2013	

3. Advice and Remarks

- The expiry date is based on the current knowledge and holds only for proper storage conditions in the originally closed flasks/ packages.
- Whenever the container is opened for removal of aliquot portions of the substance, the person handling the substance must assure, that the integrity of the substance is maintained and proper records of all its handlings are kept. Special care has to be taken to avoid any contamination or adulteration of the substance.
- We herewith confirm that the delivery is effected according to the technical delivery conditions agreed.
- Particular properties of the products or the suitability for a particular area of application are not assured.
- We guarantee a proper quality within our General Conditions of Sales.

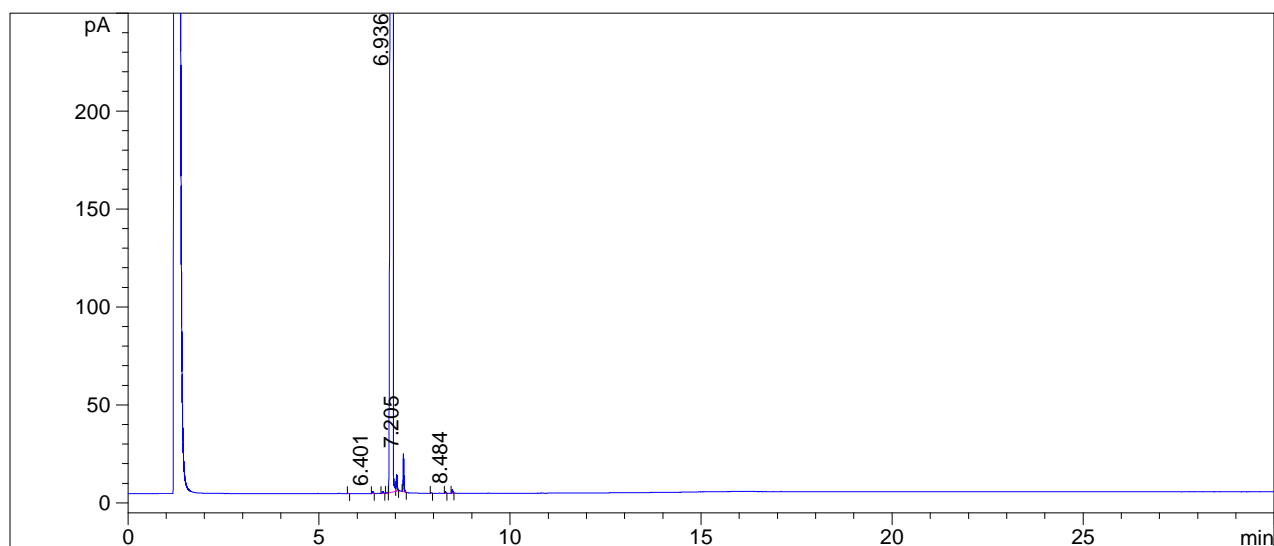
Sigma-Aldrich Laborchemikalien GmbH
Quality Management SA-LC

Analytical Department

GLC-Method

Article : Anthracene
Article-No : 31581
Batch : SZBD155XV
Column : MDN-5, 30m, 0,25mm i.D., 0,25µm Film
Inj.-Temp. : 320°C
Det.-Temp. : 320°C - FID
Oven-Temp. : 150°C to 300°C (10°C/min) hold 15min
Split : 1:100
Flow : 1,0ml He/min
Inj.v. : 1µl solution in Dichloromethane
Evaluation : Normalisation (uncorrected)
Operator : Florie

C H R O M A T O G R A M M



Area Percent Report

#	Meas. R	Height	Area	Area %	Compound Name
1	5.764	0.177	0.29	0.005	
2	6.401	0.941	1.60	0.030	
3	6.660	1.019	2.35	0.044	
4	6.783	0.474	1.08	0.020	
5	6.936	1577.796	5322.11	99.065	
6	7.031	8.254	12.83	0.239	
7	7.205	19.249	27.71	0.516	
8	7.941	0.257	0.38	0.007	
9	8.305	0.858	1.30	0.024	
10	8.484	1.733	2.68	0.050	